

1 PDUs in effective treatment (based on Glasgow prevalence model)

2009/10 end of year target: 1,291

2009/10 end of year actual: 1,205

Deficit: **86**

Revised 2010/11 target: 1,323 (require net gain 118 PDUs)

2 New treatment journeys into effective treatment

	Journeys	% < 12 weeks
2009/10 Q4	283	89%
2010/11 Q1	278	91%

3 Planned discharges

	Exits	% planned
2009/10 Q4 YTD	200	33%
2010/11 Q1 YTD	92	33%

4 Waiting times (first treatment intervention)

	% given first intervention within 3 weeks
2009/10 Q4	95%
2010/11 Q1	95%

5 DIP

	2009/10 Q4		2010/11 Q1	
	Number	%	Number	%
DIP referrals	32	-	53	-
Clients not in treatment since 2004	4	13%	1	2%
Already in treatment at time of DIP referral	11	34%	13	25%
Clients triaged following referral	15	47%	36	68%
Of those triaged, clients started treatment	15	100%	36	100%

6 Harm Reduction and healthcare indicators (YTD)

	2009/10 Q4	2010/11 Q1
New presentations offered HBV vaccination	98%	99%
New presentations commencing HBV vaccinations	47%	20%
Percentage with injecting history who have received HCV test	62%	60%
New presentations (with injecting history) offered HepC test	97%	98%

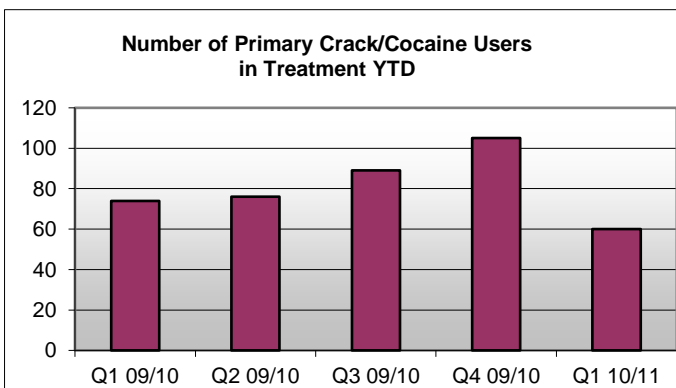
7 Percentage of ABS/Birchtree clients who are also accessing other structured treatment (Q1 2010/11)

	Caseload	% accessing other treatment
Birchtree	713	14%
ABS	455	11%

8 Drug free treatment exits

	Q4 09/10	Q1 10/11
Community treatment	44	31
Tier 4 treatment	4	6

9 Primary Crack/Cocaine users in Treatment YTD



10 Reducing those becoming tomorrow's PDUs

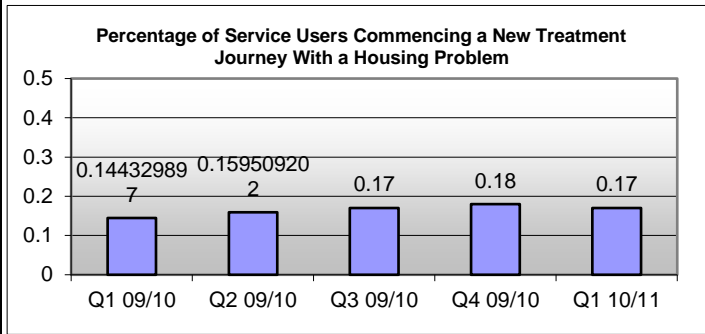
		Young Adults in Treatment (YTD)	
		18y/o	19y/o
2009/10	Q1	11	6
	Q2	12	6
	Q3	13	11
	Q4	15	14
2010/11	Q1	13	7
	Q2		
	Q3		
	Q4		

11 Transitions from YP treatment to adult treatment

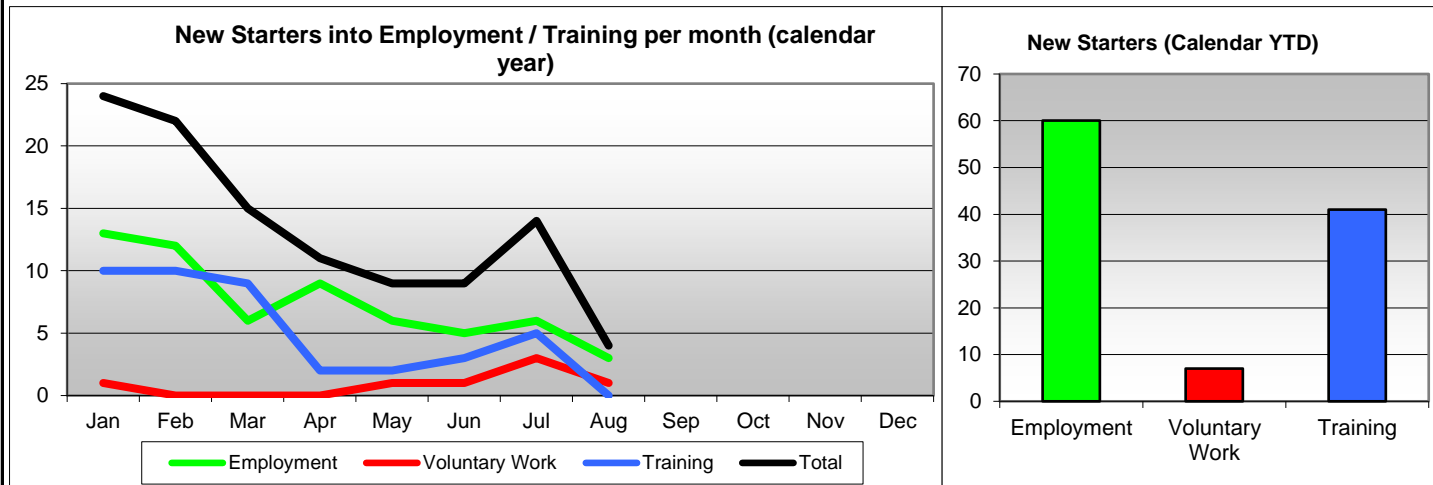
Successful transitions per Quarter

2009/10	Q1	0
	Q2	1
	Q3	2
	Q4	0
2010/11	Q1	1
	Q2	
	Q3	
	Q4	

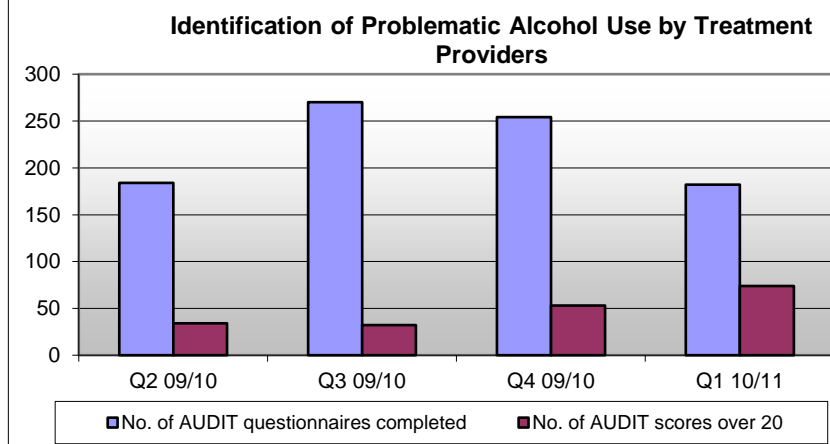
12 Housing problems



13 Employment and training



14 Problematic alcohol use



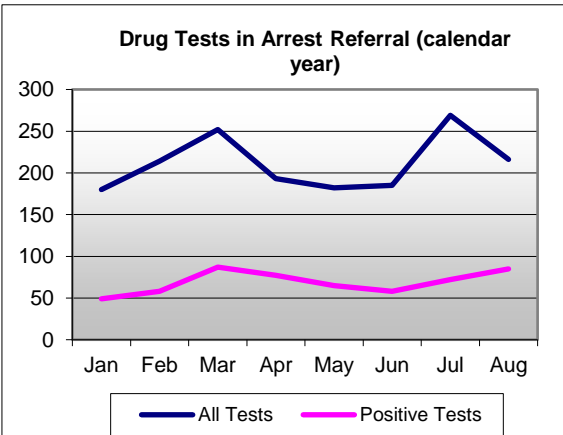
(N.B: Q1 2009/10 figures omitted as AUDIT questionnaires were not completed prior to Q2)

15 NI38

2009/10	Q1	0.98
	Q2	0.93
	Q3	1.08
	Q4	1.04
2010/11	Q1	
	Q2	
	Q3	
	Q4	

NOTE: A figure of less than 1 indicates fewer arrests than predicted

16 Drug tests



17 DRRs

